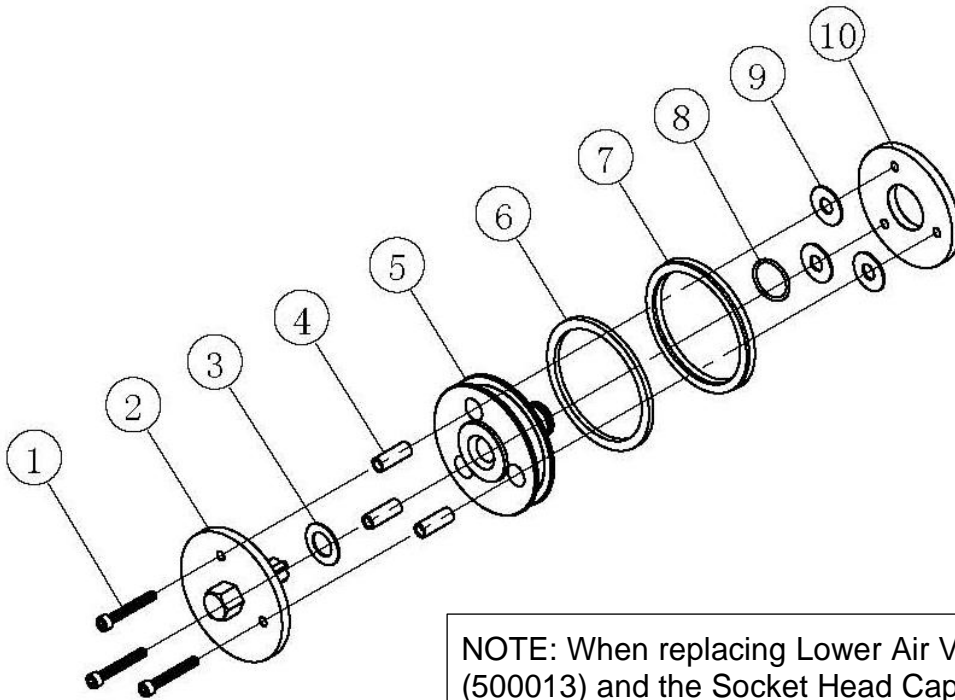


## 3.0 PARTS IDENTIFICATION

### Air motor section assembly (700004)



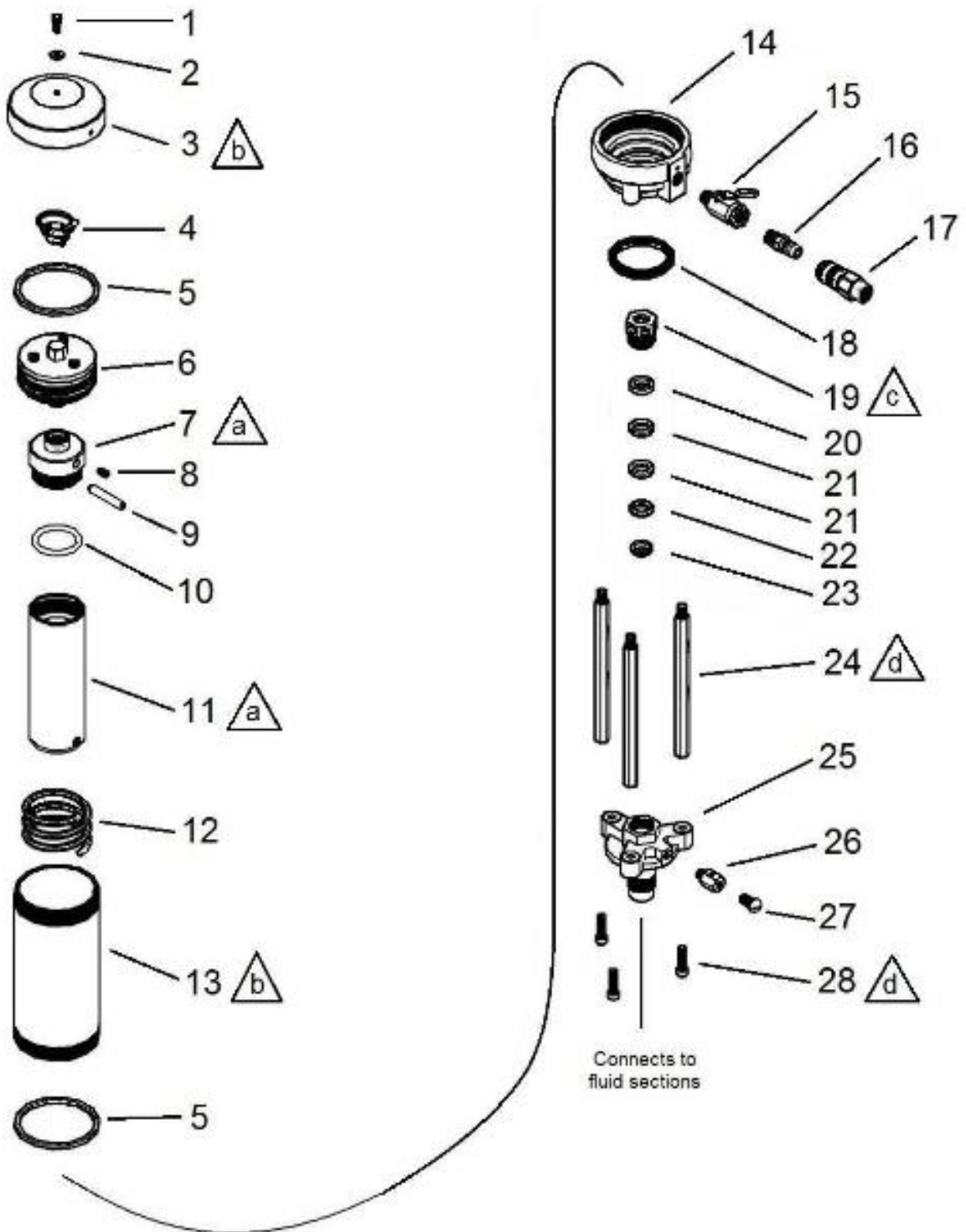
NOTE: When replacing Lower Air Valve (500013) and the Socket Head Cap Screws (500014), it is important that a Liquid Thread Sealing Compound be used to prevent the assembly from vibrating loose.

ITEM	PART NUMBER	DESCRIPTION	QUANTITY
1	500014	Socket Head Cap Screw	3
2	700003	Upper Air Valve Assembly	1
3 *	500015	Gasket Top	1
4	500012	Spacer	3
5	500011	Air Piston	1
6 *	500017	Wear Ring	1
7 *	500018	U-Cup	1
8 *	500019	O-Ring	1
9 *	500016	Gasket Bottom	3
10	500013	Lower Air Valve	1

\* Included in the Repair Kit (part number 601018).

Note: The upper hex nut is a permanent part of the upper air valve plate (#700003). Do not use a wrench on hex nut during disassembly, assembly or maintenance of air motor assembly.

**Air motor section**



**a** Torque to 15-20 ft-lbs (20.3-27.1 N•m)

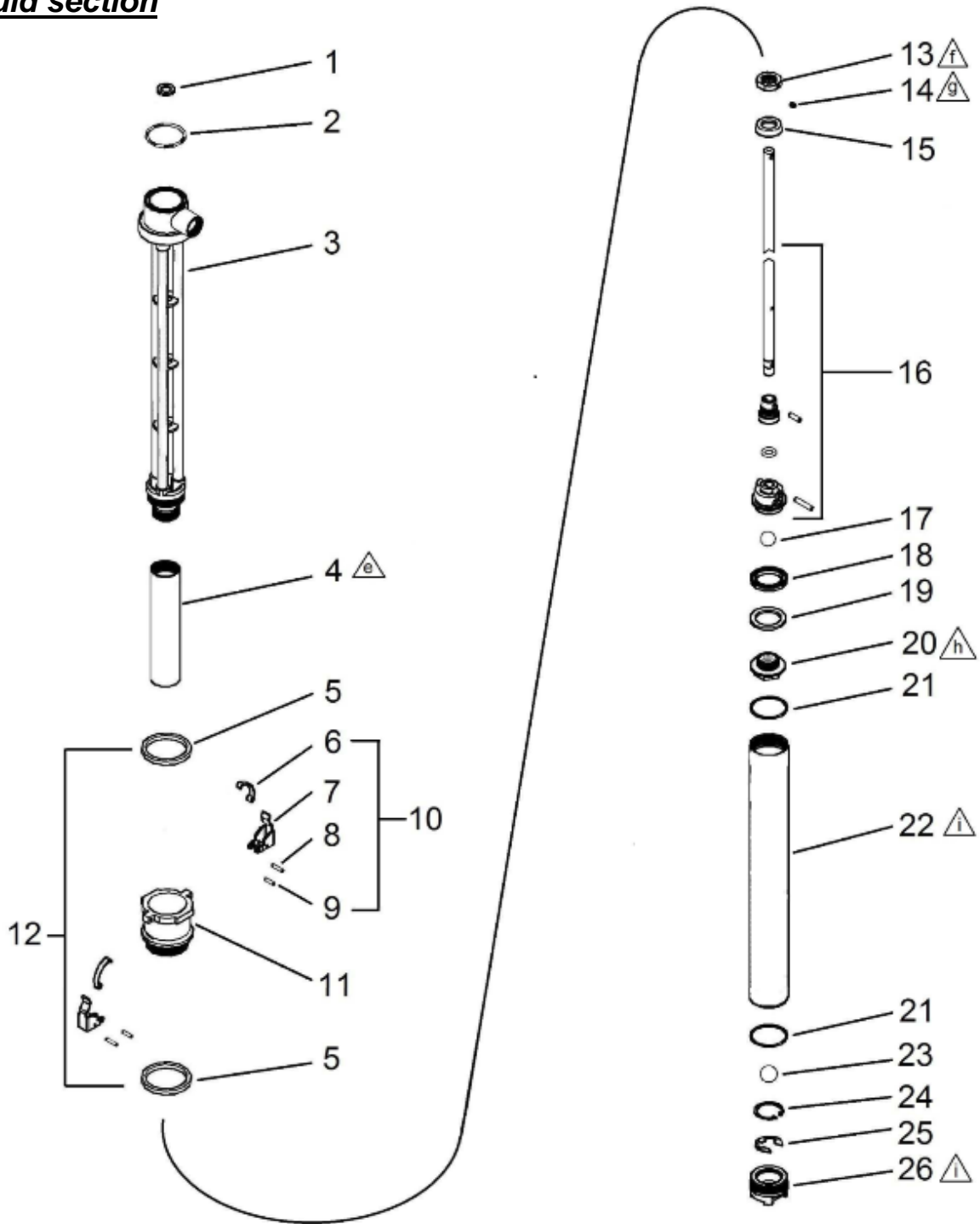
**b** Torque to 50-60 in-lbs (5.6-6.7 N•m)

**c** Tighten 1/8 to 1/4 turn past finger-tight

**d** Torque to 110-120 in-lbs (12.3-13.4 N•m)

<b>ITEM</b>	<b>PART NUMBER</b>	<b>DESCRIPTION</b>	<b>QUANTITY</b>
1	500001	Pressure relief screw	1
2	500002	Fiber washer	1
3	700001	Air cylinder cap	1
4	500005	Compression spring	1
5	500006	Gasket	2
6	700004	Air motor assembly	1
7	500020	Plunger top	1
8	500021	Socket set screw	1
9	500022	Dowel pin	1
10	500023	O-ring	1
11	700005	Displacement plunger	1
12	500026	Spring	1
13	700002	Air cylinder	1
14	500027	Air cylinder base	1
15	501804	Ball valve	1
16	500370	Air quick connector (M)	1
17	500369	Air quick connector (F)	1
18	500030	U-cup	1
19	500031	Packing nut	1
20	500033	Seal retainer	1
21	500034	FE packing	2
22	500035	Seal expander	1
23	500036	Wiper	1
24	500032	Standoffs	3
25	500037	Air cylinder mounting flange	1
26	500038	Grounding lug	1
27	500039	Round head screw	1
28	500040	Socket head cap screw	3

**Fluid section**



**e** Torque to 30-40 ft-lbs (40.6-54.2 N•m)

**f** Torque to 15-20 ft-lbs (20.3-27.1 N•m)

**g** Torque to 20-30 in-lbs (2.2-3.3 N•m)

**h** Torque to 45-55 ft-lbs (61-74.5 N•m)

**i** Torque to 10-12 ft-lbs (13.5-16.3 N•m)

<b>ITEM</b>	<b>PART NUMBER</b>	<b>DESCRIPTION</b>	<b>QUANTITY</b>
1	500041	Gasket	1
2	500042	O-ring	1
3	700011	Pump body	1
4	500047	Pressure cylinder	1
5	500053	Gasket	2
6	500050	Latch hook	2
7	500049	Bung adppter clamp	2
8	500052	Roll pin	2
9	500051	Roll pin	2
10	700009	Clamp assembly (include 6,7,8,9)	2
11	500048	Bung adapter	1
12	700008	Bung adapter assembly (include 5,6,7,8,9,11)	1
13	501604	U-cup retaining	1
14	500062	Socket set screw	1
15	500061	Piston U-cup packing	1
16	700013	Pump shaft assembly	1
17	500068	Ball	1
18	500063	U-cup	1
19	500064	Wear ring	1
20	500065	Piston valve housing	1
21	500066	O-ring	2
22	500067	Suction tube	1
23	500269	Ball	1
24	500193	Snap ring	1
25	500192	E-clip	1
26	500191	Foot valve housing	1

## 4.0 REPAIR KITS

<b>601018</b>	Air motor section repair kit		
	Fits: 820301, 820302, 820303		
	Components include		
	Part #	Description	Qty
	500006	O-ring	2
	500015	Gasket	1
	500016	Gasket	3
	500017	Wear ring	1
	500018	U-cup	1
	500019	O-ring	1
	500023	O-ring	1
	500030	U-cup	1

<b>601035</b>	Fluid section repair kit		
	Fits: 820301, 820302, 820303		
	Components include		
	Part #	Description	Qty
	500033	Seal retainer	1
	500034	Packing	2
	500035	Seal expander	1
	500036	Shaft wiper ring	1
	500041	Gasket	1
	500042	O-ring	1
	500053	Gasket	2
	500054	Lower roll pin	1
	500055	Upper roll pin	1
	500056	Viton O-ring	1
	500061	Piston packing cup	1
	500063	U-cup	1
	500064	Wear ring	1
	500066	O-ring	2
	500237	O-ring; OP242CD ONLY	1